



This Parent Reference Guide is produced through a partnership between the Burlingame Community for Education Foundation (BCE) and the Burlingame School District. In it, you'll find information to answer questions like:

- What's the difference between PTA and BCE?
- Why does my public school need more funds?
- What is School Site Council (SSC)?
- What impact do bond measures have?

PARENT REFERENCE GUIDE

Burlingame School District 2023-2024

We encourage you to learn more and get involved, and **contribute to the BCE Annual Fund**. Our goal is to raise as many flexible dollars as possible, to support teaching positions and more for all of our TK through eighth grade students. When our fiscal year ends each June 30, BCE presents these funds to BSD in the form of a grant which becomes part of the next year's school budget. **This means that every July 1, our annual campaign begins again at zero.** Our children deserve the best possible education we can give them, so the BCE campaign relies on families to give generously year after year. Please use the QR code to the right to make your donation today!



Dear Burlingame Community,

Welcome to Burlingame School District (BSD). We're so excited to welcome you! Burlingame is a close-knit, engaged community that believes in a robust public education for each child, from transitional kindergarten through eighth grade, focused on academic, social-emotional, and behavioral growth. We rely on our family partners to help us continue improving and innovating.

The Burlingame Community for Education Foundation (BCE) raises funds each school year to pay for 19 teacher salaries in mental health, music, and physical education. This funding also supports three professional development days for all educators. Beyond the generous fiscal support of BCE, each of our seven school sites also has their own Parent Teacher Association (PTA) partners to aid in building community and promote volunteer opportunities within the schools. All of these efforts are critical to the health and welfare of our award winning school system.

This guide is printed yearly to help new families navigate BSD. Please reach out to folks listed here with questions. We need you to get involved in your child's educational journey! Your active participation in your child's educational journey is invaluable. By joining forces and fostering a strong partnership, we can ensure the continued excellence of our schools. Together, we can make a significant impact in shaping an exceptional educational experience for each child.

In partnership,
Marla Silversmith



One of the most frequently asked questions Burlingame school parents have is “How can I help my school?” There are so many ways you can make a difference to your child’s education.



Contents



- 4 Burlingame Community for Education Foundation | BCE
- 6 Parent Teacher Association | PTA
- 8 School Site Council
- 11 School Funding 101
- 12 Local Improvement Measures
- 14 Burlingame School District

This guide offers an introduction to some of the parent-supported organizations and initiatives within the school district that benefit each student.

Burlingame Community for Education Foundation (BCE)

BCE is the primary fundraising organization that enables an exceptional education for our TK-8th grade students.



Why does BCE Exist?

Passed in 1978, Prop 13 changed the way California funds our schools, capping property taxes, and gutting public school funding. Schools could no longer be supported through public funds alone. They were forced to cut music, art, electives and staff. Class sizes soared, until the concerned community founded the Burlingame Community for Education Foundation (BCE) in 1981 to fill the gap in state funding and provide the kind of education our children deserve.

Donations to BCE (a 501(c)(3) non-profit charitable organization) provide crucial funds to every school, and make a difference for every child. BCE raises more than \$2.7 million each year through parent and business donations to provide an unrestricted grant to boost our school budget. The funds are applied towards additional teachers and specialists who improve the classroom experience; professional development to enhance student learning; physical education to keep body and mind healthy; and academic enrichment such as music and world languages. This funding supplements the amount received from the State of California, bond measures, local parcel tax, and federal funds.



BCE Impact

Additional Elementary Teachers

- Keep class sizes smaller than state requirements
- Provide certificated support staff (i.e. Psychologists, Academic Intervention)

Excellence in Teaching

- District-Wide Paid Professional Development Days. Training includes STEAM & newly adopted curriculum as well as methodologies to build learning at all levels.

Music Program

- TK-8 Music Program
- BIS Musical
- Music Supplies

Physical Education

- Instruction for TK-8 to build physical, social, emotional and mental development

BIS World Languages

- Students have the opportunity to learn a new language and expand their world view

What You Can Do

It is only with your investment that we can take good public schools and make them into great public schools. We suggest an annual investment of \$1,700 per student every fall, or \$170/month if you start in September. We also recognize that many families may not be able to contribute at such a level. Any amount is appreciated and will make a difference to all of our students. Please consider making an annual contribution every fall to BCE.

Contribute today at bcefoundation.org.

We are also proud to report that our education foundation is almost entirely run by 200+ parent volunteers. Contact your BCE School Site Director or email the BCE office at info@bcefoundation.org for more info about our organization.

BCE Contacts

Jen Faber, BCE President

president@bcefoundation.org

Chaitanya Bhuskute, President-Elect

presidentelect@bcefoundation.org

BIS: John Giesecker

bis@bcefoundation.org

Franklin: Alana Kleinerman

franklin@bcefoundation.org

Hoover: Michelle Dow

hoover@bcefoundation.org

Lincoln: Meghan Dunne

lincoln@bcefoundation.org

McKinley: Sharyl Wong

mckinley@bcefoundation.org

Roosevelt: Shantel Weinsheimer (Interim)

roosevelt@bcefoundation.org

Washington: Melody Valdez

washington@bcefoundation.org

New Families: Nicole Mustafa

newfamily@bcefoundation.org

BCE Office:

info@bcefoundation.org



Parent Teacher Association (PTA)

The PTA is a volunteer-driven, community-building organization that focuses on child advocacy, parent education, plus classroom and teacher support.

How It Helps

By strengthening the community among teachers, parents and children, PTA aims to provide a vital link between school and families to make our school community stronger. Each school's PTA helps coordinate volunteerism in the classroom, plans family social events and supports parent communication.

PTA Impact

There are a wide variety of events and volunteer opportunities throughout the year, day and night. PTA support is school-specific, including:

Community Building:

- Weekly Newsletter
- Education Nights (ie. Math, Science, Art Nights)
- Parent Education Speakers

School Celebrations:

- Teacher & Staff Appreciations
- Fifth Grade Promotion Celebration
- Special events and School traditions

Supporting Students and Teachers:

- Volunteering in the classroom, library and at lunch duty
- Assemblies
- Classroom and art supplies for projects
- Book Fair

Burlingame PTAs are prohibited from paying teacher or staff salaries.

PTAs hold their own events at each school site with the primary function of community building and may also raise smaller funds for things like field trips, school supplies, and playground equipment.

What You Can Do

PTA plays a vital role in supporting our students and school. Please become a member to show your support. Stay informed and read your school newsletter! Check out your school's website for the link to join PTA and sign up for communications.

Get involved by volunteering to help organize or support one of the many school-specific events during the year. Attend events with your family and come check out a PTA meeting.

Contact

Your school newsletter should provide PTA meeting and event updates.

PTA Contacts

Carrie Chen

BSD PTA Council President
burlingameschoolspta@gmail.com

Ingrid Gauthier and Birte Scholz

BIS PTA Co-Presidents
president@bis-pta.com

Dilip Sundarraj

Franklin PTA President
president@franklinpta-burlingame.com

Amanda Rinkoff

Hoover PTA President
hespta@burlingameschools.org

Kim Malhotra

Lincoln PTA President
lincoln.pta.president@gmail.com

Katie Jay

McKinley PTA President
pres.mckinleypta@gmail.com

Tracy Avelar

Roosevelt PTA President
weareroosevelt.pta@gmail.com

Jennifer Ellison

Washington PTA President
wespta@burlingameschools.org

School Site Council (SSC)

Each school has an integrated group of parents, school leadership, and school staff that comprises the School Site Council: the principal, one staff member, three teachers, and five parents. School-wide parent voting selects parents who serve three-year terms. Teachers are selected by other teachers and also serve for three years. Parent elections are held in the spring.

How It Helps

Throughout the school year, the SSC creates annual and long-term plans for school-wide improvements based on the Burlingame School District goals, including new academic programs, staff development, parent outreach strategies, or other student development programs. The SSC develops a three-year School Improvement Plan which is to be approved by the Burlingame School Board. They review the plan regularly to see how well it is meeting students' needs and modify the plan as necessary. In addition, they develop an annual school budget and monitor it on an ongoing basis.





SSC also establishes and maintains communications with BSD, school district personnel, and the community for the benefit of our students' educational experience.

What You Can Do

Non-members are invited to attend the monthly meetings, pass their concerns on to an SSC member or write a letter to the Council. The more voices heard, the better the SSC can do its job as representatives of the whole school community.

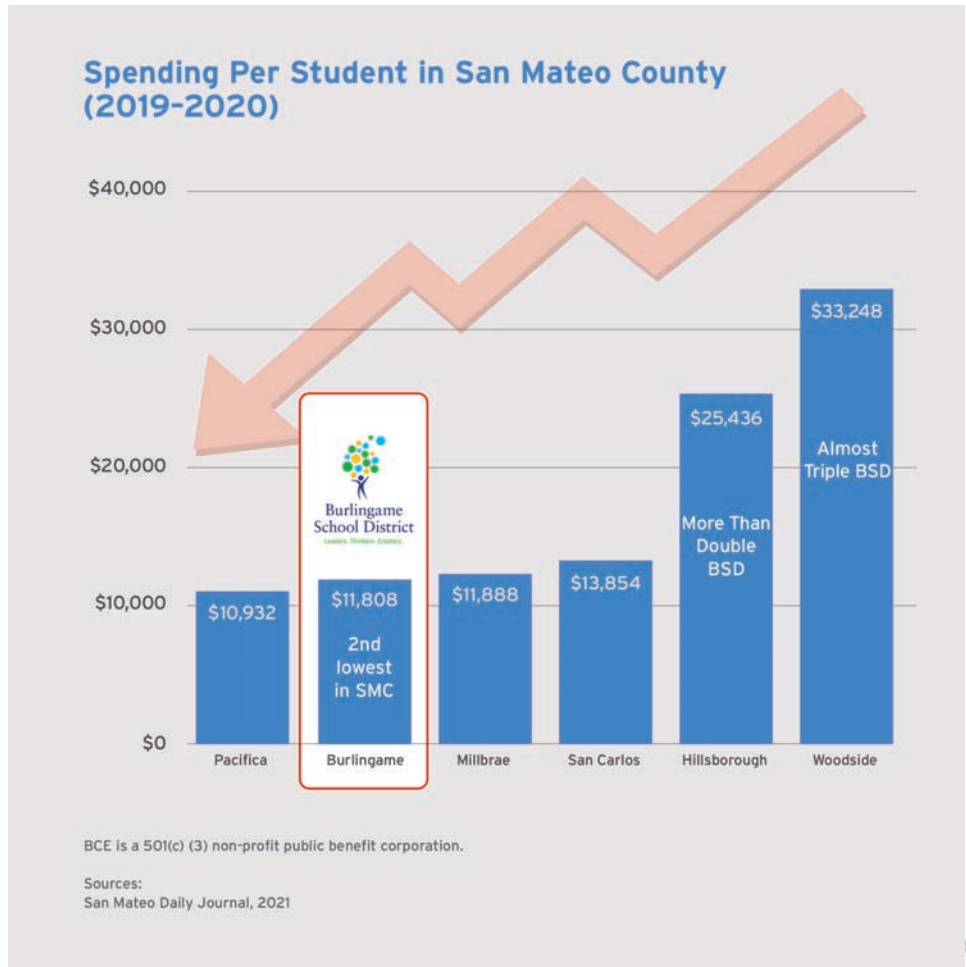
The regularly scheduled time is determined at the beginning of the school year and will be announced in each school's newsletter.

If you are interested in becoming an SSC member, please submit your name to the school office for elections held in the spring. There are openings for new parents every year.



Burlingame School District has the **SECOND LOWEST** per-student spending levels in San Mateo County

Updated figures were not available at the time of printing,
but this data is still representative of current spending.

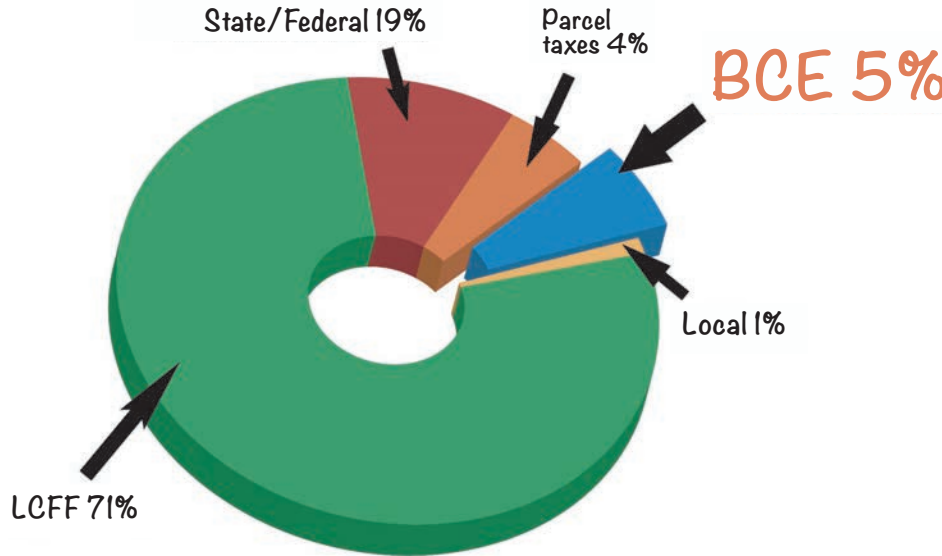


School Funding 101



Our grant is an important part of the BSD Budget—\$2.5M+ that can't be replaced.

2022/23 General Funding Revenues



Burlingame School District Academic Year 2022-23

- Approx 3,300 students
- Revenue ~\$51.1M
- Expenditures ~\$51M
- State/Fed Funding: (11%)
- Local parcel tax: \$2.1M (4%)
- BCE funding: \$2.65M (5%)
- LCFF* State Funding: 71%

Parcel Tax

The \$256 per parcel tax raises about \$2M for BSD and accounts for about 5% of BSD's budget. These dollars fund teachers along with the BCE grant.

*Local Control Funding Formula (LCFF)

** Percentage of State/Federal funding is atypically high due to one time pandemic funding



MAKING A DIFFERENCE!



Local Capital Improvement Measures

The Burlingame School District needs to invest in capital improvement projects for school facilities and grounds in order to address daily wear-and-tear and renovate for future needs. When those needs arise and can't be covered with existing funds, the District may seek alternative sources of funding including voter approval for a general obligation bond measure.

California Constitution Article 13A defines the following: "Bonded indebtedness incurred by a school district, community college district, or county office of education for the construction, reconstruction, rehabilitation, or replacement of school facilities, including the furnishing and equipping of school facilities, or the acquisition or lease of real property for school facilities, approved by 55 percent of the voters of the district or county, as appropriate, voting on the proposition on or after the effective date of the measure adding this paragraph."



How It Helps

Local school districts simply do not have the means within their annual budgets to fund facilities' improvement projects. Local bond measures provide dedicated funding that is overseen by an audit committee and local oversight committees to ensure the funds are spent according to plan. The funds cannot be used to support any school salary or administration costs.

Local Bond Measure Impact

"Measure M" in November 2016 authorized the District to issue up to \$56,000,000 aggregate principal amount of the District's general obligation bonds. In March 2020, Burlingame voters passed "Measure O" which authorized the District to issue up to \$97,000,000 aggregate principal amount of the Districts' general obligation bonds.

These bonds have helped fund various facility improvements at our Burlingame elementary schools and Burlingame Intermediate School including:

- New classroom buildings
- New playground blacktops, fields, water fountains/bottle fillers, benches
- Repair or replacement of leaking and deteriorating roofs

- Install or improve Fire Safety Systems
- Upgrade heating and ventilation system for improved energy efficiency
- Install solar panels
- Update aging and/or deteriorating restrooms
- Improve technology infrastructure
- Renovate school classrooms and improve access for teachers or students with disabilities
- Enhance school security and communication systems for improved student safety
- Install new turf playing fields
- Build new middle school Library Media Center
- Renovate middle school science classrooms
- Repair or replace outdated classrooms and labs to support 21st-century education
- Remove dry rot, lead and asbestos
- Protect student and staff safety, including installing security cameras
- Replace aging and inefficient plumbing and electrical systems

What You Can Do

Support our schools' ability to provide the best possible environment for our children's learning. Vote to pass these measures when they arise.

OUR SCHOOLS

Burlingame Intermediate

1715 Quesada Way, Burlingame
Principal: Greg Land

Franklin Elementary

2385 Trousdale Dr., Burlingame
Principal: Jude Lawrence

Hoover Elementary

2220 Summit Dr., Burlingame
Principal: Lisa Booth

Lincoln Elementary

1801 Devereux Dr., Burlingame
Principal: Laura Afshar

McKinley Elementary

701 Paloma Ave., Burlingame
Principal: Joy Shmueli

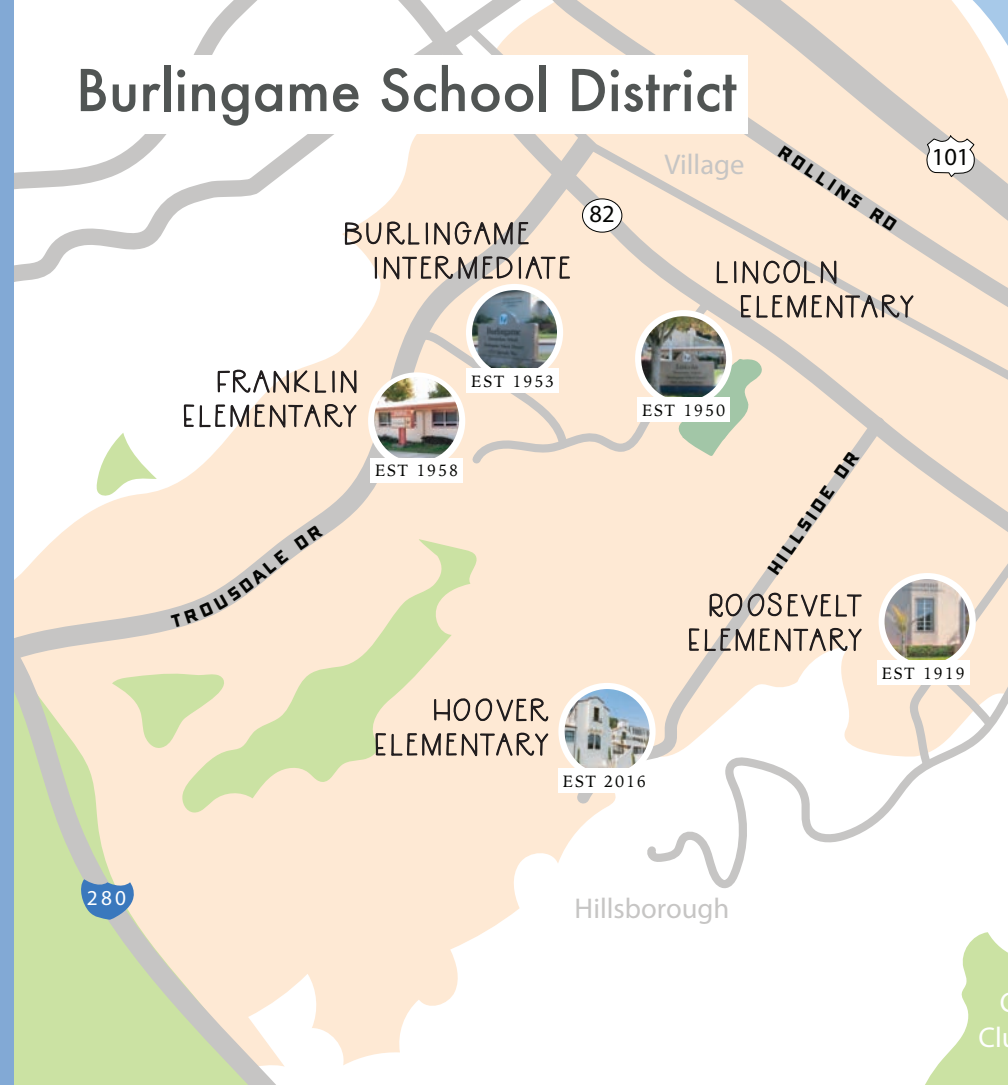
Roosevelt Elementary

1151 Vancouver Ave., Burlingame
Principal: Matt Pavao

Washington Elementary

801 Howard Ave., Burlingame
Principal: Alyssa Jaramillo

Burlingame School District





OUR VISION

“ Challenging the leaders, thinkers,
and creators of tomorrow ”

OUR MISSION

“ Engage our community to build
resilient, curious, compassionate,
problem-solvers who are prepared
for their future ”



INVEST | VOLUNTEER | GET INVOLVED

bcefoundation.org



BURLINGAME COMMUNITY
EDUCATION FOUNDATION

Find translated guides online:

